



EWING GREEN TEAM

Promoting People, the Planet and Prosperity in Ewing

JUNE 25, 2014 MINUTES

LOCATION: EWING SENIOR AND COMMUNITY CENTER

PRESENT

Green Team members denoted with an asterisk *

Pete Boughton *
David Byers*
Valorie Caffee*
Mary Corrigan
Dave Ensminger
Lisa Feldman*

John Hoegl*
Jennifer Keyes Maloney [Council Rep]
Joanne Mallowney*
Joe Murphy*
Anita Pinkus
Mark Wetherbee*

INTRODUCTION

The June meeting was called to order by Pete Boughton at 7:00 pm. Green Team members were asked to approve the May minutes as posted on our website and hot-linked within the meeting reminder email. Joe Murphy made a motion to put off the approval of the May minutes until next month as not enough attendees had read them. Mark Wetherbee seconded the motion. All Green Team members voted in favor.

Several interested Ewing residents attended: Mary Corrigan, Dave Ensminger, and Anita Pinkus.

COMMUNITY CONVERSATION DEBRIEF

Attendees discussed the strengths and weaknesses of the Community Conversation on June 7th. Overall, it was felt that the event went well, reflected well upon the Green Team, and that attendees were pleased to have attended. The following were some of the topics covered:

EVENT PROS

Diversity - Complete Streets discussion - Recycling discussion - Ambiance of venue - Low waste - Sense of goodwill - **The right # of participants*** - Sense of community - Lots of ideas - Tasty and well-catered food - Good Bonner student/Catering staff support - Well within budget (approx. \$600 – 700 – to date \$6700 of \$10K grant spent) - That there was a budget drawn up - Plenty of funds in grant left for projects or to extend outreach with a 2nd Visioning session more focused on sustainability if we want or to expend in support of Sustainable Jersey projects and actions.

Ewinggreenteam.org

Contact us: ewinggreenteam@gmail.com

Monthly Meetings at Ewing Senior & Community Center, 999 Lower Ferry Rd, Ewing, NJ 08618, 4rd Wed. of each month



EWING GREEN TEAM

Promoting People, the Planet and Prosperity in Ewing

EVENT CONS

A couple of naysayers - No significant discussion on energy - *Too few people from the public schools, the clergy, the fire halls, youth and local businesses - **Wish more people had come*** - Low response rate to mailed invitation; fewer than half bothered? - Low rate of yesses; about ¼ of invitees - 20% of yesses did not show up - Delay in MaGa debriefing meeting - Coffee –late - A few people felt that the introductions were a little too long and more time could have been spent on discussions which were the highlight - Insufficient planning for the immediate aftermath (cleanup, thank yous, surveys, publicity)

IMPORTANT FOLLOW UP

Attend to session & survey topics & useful suggestions - Incorporate more discussion time in the follow up 2nd visioning - Turn prominent topic areas into an action plan that ties into SJ points, actions - Expand the invitation list to V2 to more of the underrepresented - Develop a volunteer network - Develop a Welcome to Ewing package - Develop Recycling map for layer of community asset map - Develop a neighborhood layer for community asset map with neighborhood association's info.

AGENDAS FOR NEXT THREE GREEN TEAM MEETINGS

After some debate about the best pairing of Key Performance Areas to be discussed at the next three Green Team meetings, the following calendar was decided upon:

- July 30th meeting – **Community Engagement** and **Waste/Recycling**
- August 27th – **Conversation and Preservation** and **Development and Transportation**
- September 24th - **Community Branding** and **Local Economy**

ASSIGNMENTS

Joanne and Pete will compose emails to send out to three groups of attendees for the July meeting. Those who self-selected for Community Engagement and Waste will receive the most directed email encouraging them to return for the discussion on their particular area of interest. All event attendees will receive a generally similar letter. A third version will be sent out to the entire Green Team mailing list, informing them about this process and inviting their participation.

COMMITTEE REPORTS

RAIN GARDEN SEMINAR

Ewinggreenteam.org

Contact us: ewinggreenteam@gmail.com

Monthly Meetings at Ewing Senior & Community Center, 999 Lower Ferry Rd, Ewing, NJ 08618, 4rd Wed. of each month



EWING GREEN TEAM

Promoting People, the Planet and Prosperity in Ewing

Joanne reported that the Environmental Insights Series continued with a presentation at the Hollowbrook Community Center on June 10th by Lindsay Blanton. She did an excellent job and attendees enjoyed her presentation. Attendance was light - about 10 attendees in total. Planning will begin again in late summer for the coming Fall/Winter season. Anyone with suggestions for topics and presenters should forward those to Joanne. Look for a planning session to be held shortly.

GARDEN CLEANUP

Joanne also reported that there was another Garden Cleanup at the Community Gardens the morning of June 21st. We had a small contingent of TCNJ who volunteered their services, doing an excellent job. Jack Baldwin directed the students prior to Green Team member arrival as directed by Michael. Additional work on the paths was completed in the back right corner of the gardens. However, there was insufficient cardboard to complete the entire task. Some time was also devoted to adding leaves (needed browns) to the compost bins and weeding the main paths. We had a reasonable showing of gardeners - perhaps 10 - 12 with some new faces.

ISLES TRENTON GARDEN TOUR

Joanne and Michael had asked Dave Byers if it would be possible to run a tour of the Isles Gardens for the gardeners who were interested. Dave agreed and said that he arranged for the tour on Saturday morning, June 28th. He and Jim Simon, Program Manager of Urban Agriculture of Isles planned to visit about 6 different gardens during the tour. Michael arranged for a TCNJ van to transport the gardeners. Green Team members were invited to attend.

GARDEN ART & DEMO PLOTS

Anita Pinkus had volunteered to maintain some of the Green Team demonstration plots during this season and she got us off to a terrific start. Quite a number of the raised beds are full and blooming. Jo also has made arrangements for a start on artwork in the gardens. The compost bins that were created out of old wooden pallets were going to be clad with plywood and painted. One of the gardeners belongs to a homeschooling association and she has a call out to get some students to spend a day painting the bins. Joanne Mallowney spent \$230 to fund this initiative. Anyone who would like to contribute to the cost of the plywood should give their contribution to her.

EWING TOWNSHIP REDEVELOPMENT AGENCY

Joe Murphy reported that there would be a redevelopment meeting in 2 weeks on the regular meeting date. They are hopeful for shovels in the ground at the Parkway Ave. project by September.

Ewinggreenteam.org

Contact us: ewinggreenteam@gmail.com

Monthly Meetings at Ewing Senior & Community Center, 999 Lower Ferry Rd, Ewing, NJ 08618, 4rd Wed. of each month



EWING GREEN TEAM

Promoting People, the Planet and Prosperity in Ewing

COMMUNITY ASSET MAPPING

The Ewing Township mapping project is currently being hosted on a free online platform known as Community Walk [http://www.communitywalk.com/ewing/nj/ewing_township_nj/map/1661721]. As the software is free there are a number of limitations to its features. We have been looking at ArcGIS (geographic information system (GIS) mapping software) as the professional alternative and downloaded some sample data. However, it is expensive. TCNJ has a subscription that we could use to input the data, however, Joanne and Michael feel we should be cautious about creating a product that we don't have rights to update. Joanne will contact the Township IT department to see if the Township has a subscription and if we could update our maps in future using a Township licensed terminal. See Appendix A for screen shot comparisons.

BIKE/WALKING TOUR AND AUDIT

The possibility of a Ewing Bike Tour was briefly discussed with great enthusiasm as was a Biking/Walking Audit in town. Drawbacks regarding the bike tour might be insurance for the event and police time costs if police presence for safety was requested. The Bonners could possibly help with the audit.

SUSTAINABLE JERSEY POINTS

Possible Sustainable Jersey points for Ewing actions were briefly discussed since by the time the Visioning process is completed we will be beginning our second year of Sustainable Jersey Bronze level accreditation. Action areas for points for the next round include:

Action	Points	# of Years Good for
Complete Streets*	20	3.5
Bike Audit	5	5.5
Sustainability Planning		
Asset Mapping	10	3.5
Community Visioning	10	3.5
Action Plan	10	3.5
RX Drug Disposal	10	5.5
Food Waste	10	18 mo.
Recycling Depot	10	18 mo.
Recycling Education	5	18 mo.
Paper Shredding	5	18 mo.
Recycled Materials/Composting	10	12 mo.

*It is likely that a Complete Streets resolution will be passed and adopted by Council

Some actions are possible repeats such as Create a Green Team, Environmental Commission, etc.

Ewinggreenteam.org

Contact us: ewinggreenteam@gmail.com

Monthly Meetings at Ewing Senior & Community Center, 999 Lower Ferry Rd, Ewing, NJ 08618, 4rd Wed. of each month



EWING GREEN TEAM

Promoting People, the Planet and Prosperity in Ewing

NEW BUSINESS

Valorie Caffee spoke about the Green Faith Water Shield program. Green Faith encourages churches to be more involved with water conservation and to participate in projects that enhance water conservation efforts in their congregations. The program is a type of environmental merit badge program signifying that a faith-based institution has taken steps - educational, spiritual, and practical - to conserve water, protect water quality, and mobilize its members and community to do the same at home. Numerous congregations in New Jersey have signed up to participate so far. None in Ewing have done so to date as far as we know. We could send out a letter to the various churches in town and introduce them to the program and collaborate with them after we run this by Administration. Churches were underrepresented at our visioning and this would be a great opportunity to collaborate with area churches and get them involved with green efforts. A suggestion was made that we invite a Green Faith representative to give a brief presentation at one of our meetings. Sustainable Jersey has a 10 point action for a Water Conservation Education program as one possibility under the Natural Resources category.

CONCLUSION

The close of the meeting was announced at 8:30 p.m. by Pete Boughton with a reminder that the next general meeting will be held on 7/30 not 7/23.

Respectfully Submitted,

Joanne Mallowney, Communications/IT Officer

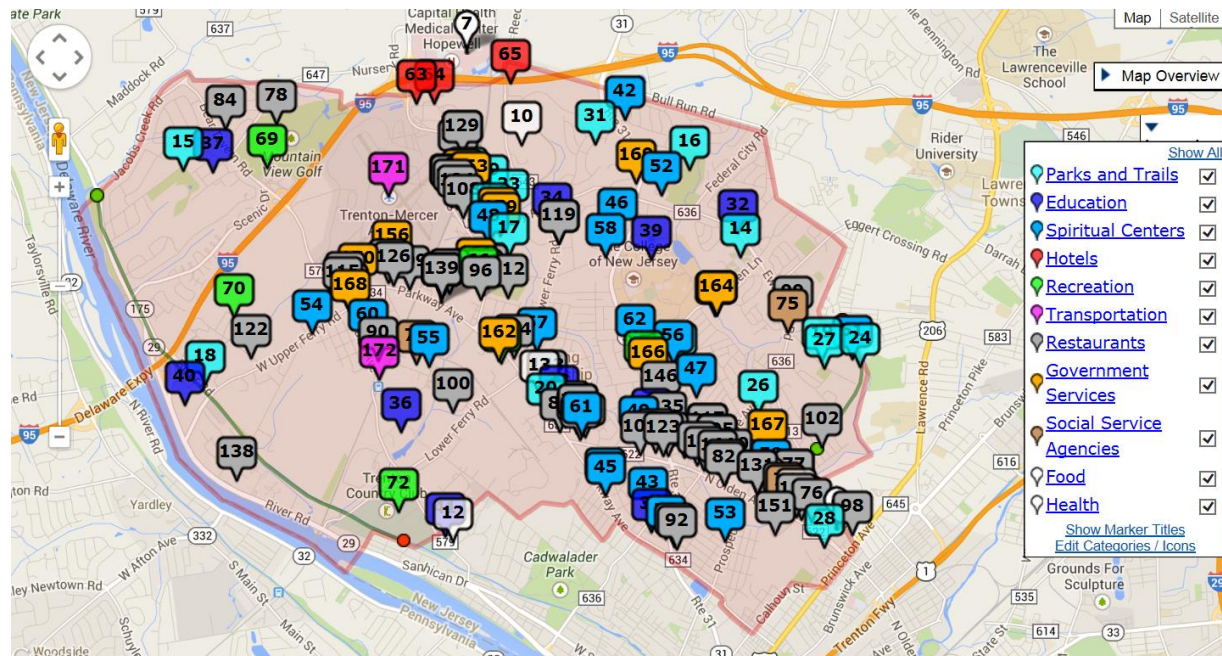


EWING GREEN TEAM

Promoting People, the Planet and Prosperity in Ewing

APPENDIX A

COMMUNITY WALK SCREEN SHOT



This is a screen shot of the Community Walk account as it now stands. We have about 172 entries – a great base layer. The outline of Ewing is hand drawn at this time and not exact. Obtaining and importing the exact GPS points of the border is problematic for the free software.

Ewinggreenteam.org

Contact us: ewinggreenteam@gmail.com

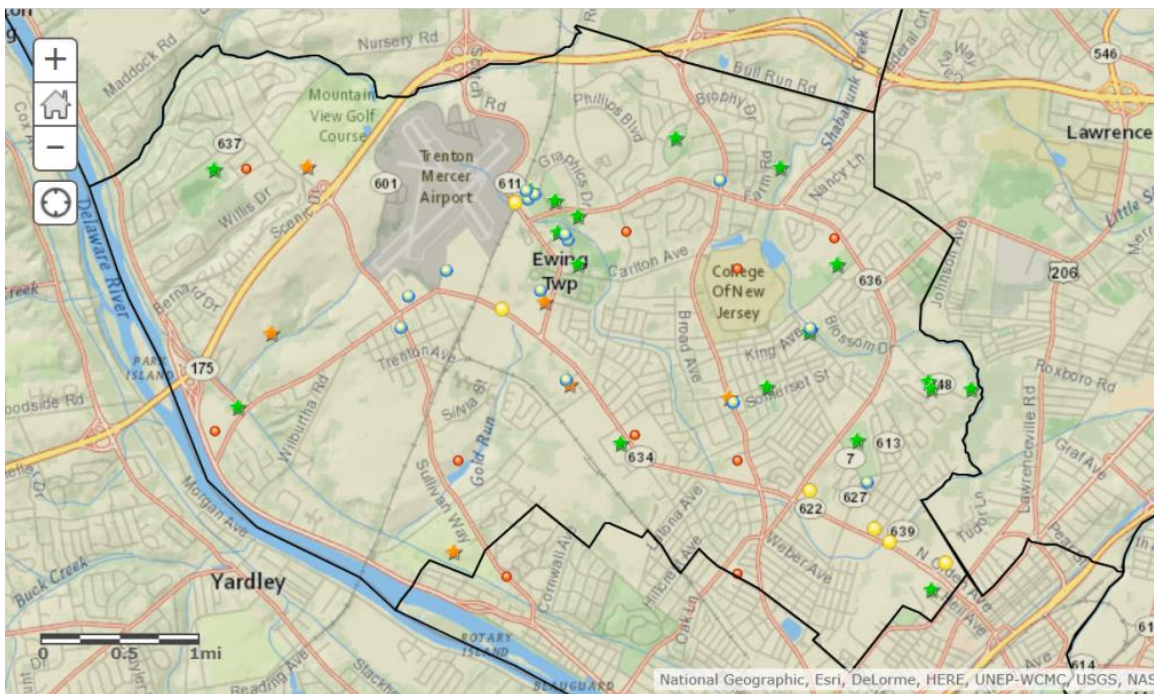
Monthly Meetings at Ewing Senior & Community Center, 999 Lower Ferry Rd, Ewing, NJ 08618, 4rd Wed. of each month



EWING GREEN TEAM

Promoting People, the Planet and Prosperity in Ewing

ARCGIS SCREEN SHOT



The Ewing Township ArcGis map, located at <http://www.arcgis.com/home/webmap/viewer.html?webmap=164bf25fb744411c9a6002f1ca41e582>), has only some preliminary data points entered but a professional upload of the Township boundaries was made. More investigation will need to be done to see how much data can be uploaded in the free version of this mapping software.

Ewinggreenteam.org

Contact us: ewinggreenteam@gmail.com

Monthly Meetings at Ewing Senior & Community Center, 999 Lower Ferry Rd, Ewing, NJ 08618, 4th Wed. of each month